

What Makes Sirui Your Best Choice?

Forged for Greater Strength and Reduced Weight

Instead of using traditional casting methods typical of tripod construction, Sirui is a pioneer in using forging technology in manufacturing. During the forging process, the deformation and recrystallization of metal causes the structure of the metal to be more welded together and compact - greatly increasing its strength-to-weight ratio. This enables Sirui to build products with exceptional strength and durability, that are surprisingly light.

Forging ensures the integrity of metallic fibers so that it remains consistent inside & out. Good integrity allows for a longer lifetime as well as better performance.

In fact, the forging process can create parts that are much stronger than those manufactured by any other metalworking process.

Forged



The added strength of forging allows thinner, lighter components.

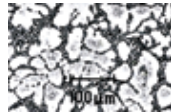


Micro structure of the metal after forging. The consistent structure provides very impressive strength.

Cast



Others' cast components must be thicker and heavier to provide the same strength.



Micro structure of the metal after casting process. Inconsistent structure with many gaps and weaknesses.



8 Layers of Carbon Fiber for Superior Load Capacity

SIRUI is one of the few manufacturers who make their own Carbon fiber leg tubes. The use of 100% carbon fiber and 8 cross pattern layers, makes SIRUI tripods and monopods capable of supporting impressive load capacities, while providing a lightweight product. In addition to providing high strength and low weight, carbon fiber is also highly resistant to temperature changes, friction (no need for lubrication) and corrosion.



Custom Anodized Surface Treatment

All SIRUI products undergo a special anodized surface treatment that makes all metal surfaces highly resistant to wear and increases durability and weather resistance. Anodizing is an environmentally safe electro-chemical process. This also prepares the surface to provide better adhesion of colored finishes.



Temperature Tolerance Test

Photographers often work in extreme environments, like blazing deserts or sub-zero mountaintops. It is vital that your equipment works under these conditions. That is why we torture-test all of our products - under conditions that far exceed what most people will ever experience (-40° ~ 212°F/-40° ~ 100°C). SIRUI is the first Chinese manufacturer to continuously perform the 4-hour test (equal to many years of use) on all products.



Certified Longevity Tests For Quality & Reliability

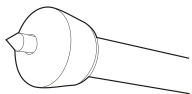
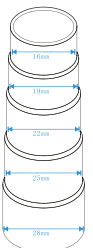
To confirm the quality and reliability of SIRUI tripods (and our dedication to details), an independent testing lab (SGS) subjected the leg angle lock spring mechanisms to exhaustive longevity tests. The test reports show that even after 100,000 actuations, the springs continued to perform perfectly!



Half-turn Leg Locks

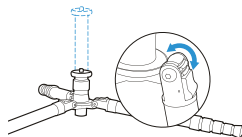
To lock the legs of SIRUI tripods/monopods, we utilize twisting locks for maximum reliability and stability. Simply twist the rubber leg locks 1/2 turn and the legs will extend by themselves.

Precision Leg Tubes
The difference in diameter of N/TX/R/SN series tripod tubes is only 3 mm. Thanks to precision manufacturing, the legs open and close easily, while the small diameter difference provides added leg stability.



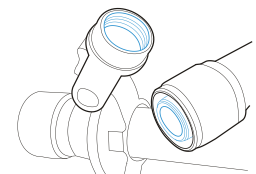
Retractable Steel Spikes

For added stability outdoors, SIRUI 2/3/4 Series tripods and monopods have retractable stainless steel spikes, stored inside the slip-resistant rubber feet.



Free Short Center Column

TX/N/M/SN/R3/R4 series tripods allow low angle shooting for unique perspectives and macro photography. And most models include a free short center column (excludes R series and T-005/025) for added flexibility.



Convert to Monopod

The detachable leg of S-N/N/M series tripods lets you transform your tripod into a monopod! Reduces the amount of equipment you need to carry and makes your camera bag or backpack lighter.

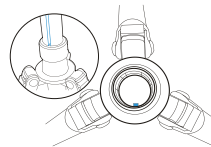


Sirui 6 Year Warranty

Sirui backs up its products with a 6 Year Warranty!

Non-Twist Center Column/Legs

All SIRUI center columns and legs have keyed, grooved channels, that prevent twisting - providing additional stability and safety for your photographic equipment.



www.argraph.com

Address: 111 Asia Place, Carlstadt, NJ 07072
Phone: (201) 939-7722

Follow us at twitter.com/Argraph